

CLENDON PARK SCHOOL

NEWSLETTER



145 ROWANDALE AVE, MANUREWA 2102 office@clendonpark.school.nz

267 6671
SELECT 1 FOR ABSENCES

027 890 3311

TERM 4 WEEK 6



School will be closing for the year on Thursday 14th December at 1.00pm

PRINCIPAL'S MESSAGE

There are many ways of learning. Children learn by watching, by listening and especially by doing.

All children go through a number of stages but there are differences between children within each stage. There are also differences in the length of time it takes for children to move from stage to stage.

Self-esteem is about who you are as a person and how you feel about yourself and is a very important part of learning. Feeling loved, valued, wanted and respected, leads to feeling good about yourself and being confident. Once children have this confidence, they can try new things, explore their world, cope when things go wrong and feel that they have a chance to succeed.

You help build your children's self-esteem when you:

- show them that they are lovable and loved
- support them in trying new things
- show them that you enjoy being with them and want to spend time with them
- help them learn new skills and praise them when they try these out.

Children need to learn that being different is okay – we are all different in one way or another.

Your children will learn from you to value all the different things they can learn from others. Your attitude to different cultures will make a big difference to the way your children treat people from a different culture.

- You can help their cultural understanding by telling stories about your own family history and background and showing them you are proud of it.
- Talk about the differences and what we can learn from them.
- Give them opportunities to share the different experiences in homes of other children.
- Give your children opportunities to see and take part in cultural events – festivals, puppet shows, different foods and music.

8 Key takeaways for helping children learn

- The first and most important learning happens in the family.
- Children thrive in an environment which is interesting and where they feel loved and safe.
- All children are learners who will develop at their own rate.
- Children learn best when they have interesting things to do and interested people to help them.
- There are many ways of learning by watching, listening and doing.
- Playing is an important way children learn.
- Encourage your children from babyhood to try new things and explore new skills.
- Be guided by your own child's interests and pace.

BELL TIMES

8:55am	School starts
10:55-11:15	Interval
12:45-12:55	Lunch eating
12:55-1:45	Lunch playtime
3:00pm	End of day

IMPORTANT DATES FOR TERM 4

Week 7

21.11.23 Counties Athletics
22.11.23 Weetbix Tryathlon
24.11.23 MPSSA Athletics

Week 8

27.11.23 Year 8 Transition Day at Manurewa High School
29.11.23 Year 8 Dine n Dance
24.11.23 James Cook Taster Day

Week 9

6.12.23 Prizegiving
8.12.23 Reports to go home

Week 10

12.12.23 Whole School Fun Day
14.12.23 Last day of School

Class Attendance Week 5

Room 05 91.97%
Room 10 90.70%
Room 19 88.82%
Room 14 87.77%
Room 20 Kahu 87.38%
Room Hula 86.03%
Room 08 85.95%
Room 18 85.29%
Room 09 84.82%
Room 01 83.95%
Room 16 83.16%
Room Wheke 83.06%
Room 13 82.90%
Room Tui 82.27%
Room 04 82.25%
Room Ekaranui 81.79%
Room 07 81.76%
Room 06 81.16%
Room 03 81.02%
Room 12 80.75%
Room Maki 78.62%
Room 11 78.57%
Room Wahl 77.57%
Room 24 Kiwi 77.15%
Room 22 Kotuku 77.09%
Room 21 Pukeko 76.45%
Room 23 Kokako 76.08%
Room 29 75.58%
Room 02 73.01%
Room 25 Kereru 72.74%

School Apps^{NZ}

Our School Communication

ALL IN ONE SPOT

- School Alert Groups
- Direct Absentee Line
- Contacts Directory
- School Events
- Daily Notices
- Plus Much More!

Download our School App today!

Simple free download: In Google Play & App Store search 'SchoolAppsNZ' & choose our school and install.



Follow our two school pages for frequent updates.

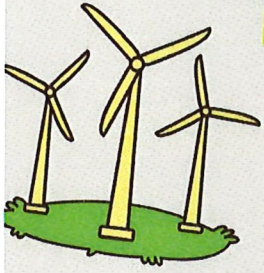
Clendon Park School | Te Whānau Āwhina Clendon Park School



COMITTMENT + PRIDE = SUCCESS

Tautua Mo Tupulaga

Room 5



Room 5 enjoyed learning about renewable and non-renewable energy. The Wonder Project Challenge was to design and build a prototype wind turbine to light up a mini town.



Follow our two school pages for frequent updates.
Clendon Park School | Te Whānau Āwhina Clendon Park School

CENTRAL COUNTIES ATHLETICS



We had a great day at Central Counties Athletics last week, with some spectacular results.

First place finishers were Andrew (Year 7 shot put), Patrick (Year 8 shot put), Jayde (Year 7 400m), Jorja (Year 8 800m) and Jenette (Year 8 400m and 1500m).

We also had a lot of second and third place finishes.

14 students will be going on to represent Central Counties at Counties Athletics on 21st November at Massey Park in Papakura.

SAVE THE DATE

Tuesday 12th December

CPS
LUAU
CELEBRATION

FACE PAINTING | ICE BLOCKS | BOUNCY CASTLES
SAUSAGE SIZZLE | POOL PARTY | WATER FIGHT
TABLE TENNIS | MUSIC

BRING
TOGS
WATER GUN
HAT

WHANAU ARE WELCOME

DRY ZONE

Located on the field and inside the hall. This space is a waterplay free area.

Available in this area is -

- Bouncy castles
- Table tennis
- PS4 consoles
- Face painting
- Arts n crafts

WET ZONE

Located around the adventure playground, front and back of Moana and the pool.

Available in this area is -

- Pool party
- Slip n slide
- Water fight

Beware if you enter this area you will get wet. The stairs and deck's in this space are no water areas.

ADDED INFORMATION

This event is a replacement of our annual Mission Bay trip. It is a normal school day, students will be required to be present for the morning roll. The junior and senior school will be separated for the day to ensure all students have the best day ever! Students wanting to participate in the water fight activity need to bring their own named water gun and will be responsible for it for the day. Families are welcome to come along for the day. Please beware if you walk in the 'wetzone' you will get wet.



Follow our two school pages for frequent updates.

Clendon Park School | Te Whānau Āwhina Clendon Park School