



Clendon Park School

a

Health Promoting School

Prospectus

2025





Clendon

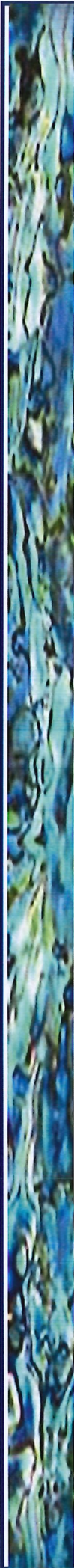
Park School

•

Health Promoting School

Prospectus

2022



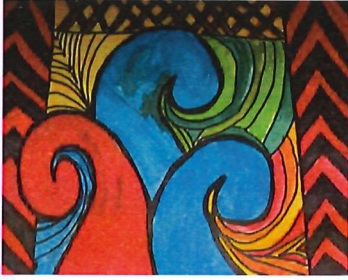
Our School

Welcome to our school.

At Clendon Park School we provide a wide range of learning experiences that enable your child to become the best they can be. We celebrate the achievements of our students - both past and present. Our aim is to work in partnership with you to assist your child to grow within a caring and whanau/family focused environment. To do this we offer you a dynamic and very hard working staff who are deeply committed to providing purposeful learning opportunities for each and every child.

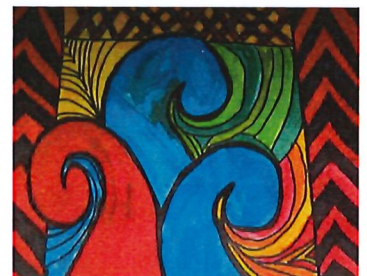
In Our School Your Child is Special

- ◆ We listen.
- ◆ We focus on your child's needs.
- ◆ We pursue academic success and excellence.
- ◆ We provide your child with a safe, secure, supportive, learning environment.
- ◆ We value Parents/Caregivers as partners in the education of their child.
- ◆ We have a very dedicated professional staff with a wide range of teaching skills.
- ◆ We provide extra support for students with special needs.
- ◆ We provide extension programmes for students with special abilities.
- ◆ We aim to discover and promote each child's unique abilities.
- ◆ We value and provide for experiences in social, cultural, artistic and sporting fields.
- ◆ We value and place real emphasis on academic success for all at individual levels.
- ◆ We encourage qualities of self-reliance, self-management, responsibility, honesty, independence and discipline.
- ◆ We teach our students to use a wide variety of digital tools to enhance their learning.



Special Features of Our School

- Eight Maori bilingual classrooms catering for New Entrants to Year 8 (Intermediate Level)
- Six Samoan bilingual classes, New Entrants to Year 8
- We work very closely with our community.
- Smaller class sizes enable teachers to extend and develop the self esteem of all pupils, broaden each child's social and cultural awareness and enhance academic levels
- We cater for each individual child as a holistic learner
- Extensive grounds with spacious playing and sporting facilities, including an all weather cricket pitch, able to be used year round.
- Large attractive fully modernised classrooms
- A wide range of cultural, sporting, activities and clubs children can join
- Many opportunities for all students to develop leadership skills
- A Board of Trustees and Staff who work closely together as a team, supported by parents, caregivers and the community
- Well resourced Library, Technology Suite, Whare Wananga / Whare Kai, Malu
- A Health Promoting School
- A school uniform



The Clendon Park Learner (below) represents our vision for learners. This vision guides the direction of teaching and learning at our school.

Clendon Park School Learners are:

Communicators, Self Managers, Team Players, Thinkers, Researchers
and Risk Takers.

During their time at our school students are supported in growing their Clendon Park dispositions, leading to independence in becoming life long learners.

Learners are :



Self Managers

We learn to know ourselves and how we learn best.



Thinkers

We learn how thinkers work, and to know how to do what thinkers do.



Risk Takers

We learn to have a go at new learning and to know how to persevere.



Communicators

We learn how to give clear messages and how to understand the messages we get.



Researchers

We learn how to ask questions and to know how to find out what we want to know.



Team Players

We learn how to work together; to cooperate, collaborate and participate.



Cleendon Park School 2025 Term Dates

TERM 1

Tuesday 28th January to Friday 11th April

Waitangi Day observed Thursday 6th February

Good Friday 18th April - in School Holidays

Easter Monday 21st April - in School Holidays

Easter Tuesday 22nd April - in School Holidays

ANZAC Day Friday 25th April - in School Holidays

106 half days 11 weeks

TERM 2

Monday 28th April to Friday 27th June

Kings Birthday Monday 2nd June

Matariki Friday 20th June

86 half days 9 weeks

TERM 3

Monday 14th July to Friday 19*th September

100 half days 10 weeks

TERM 4

Monday 6th October to Friday 10th December

Labour Day Monday 27th October



CLENDON PARK SCHOOL STAFF 2025



Principal
Deputy Principal

Mrs Sue Dawson
Mr Dudley Adams

Teaching Staff

Room 1	Y 7/8	Tautua mo Tupulaga o Samoa	Mrs Courtney Hifo Associate Principal - Tupulaga
Room 2	Y 5/6	Tautua mo Tupulaga o Samoa	Glorya Soifuaga
Room 3	Y 0/1	Tautua mo Tupulaga o Samoa	Vera Tesese
Room 4	Y 2/3	Tautua mo Tupulaga o Samoa	Tasi Mulipola-Lokeni
Room 5	Y 3/4/5	Tautua mo Tupulaga o Samoa	Tuli Tofa
Room 6	Y 7/8	Manulua	Mr James Dawson Associate Principal
Room 7	Y 7/8	Manulua	Donna Cowley Renee Tuapawa Mrs Marie Tuumaialu
Room 8	Y 5/6	Manulua	Mr Fou Tuumaialu
Room 9	Y 5/6	Manulua	Matua Faenza Wanoa
Room 10	Y 7/8	Manulua	Whaea Ataria Reeder-Roberts
Room 11	Y 0/1	Nga Pihinga	Mrs Emilee Wanoa
Room 12	Y 1/2	Nga Pihinga	Whaea Leanne Nathan Associate Principal
Room 13	Y 2/3	Nga Pihinga	Miss Maaria Crosbie
Room 14	Y 5/6	Manulua	Mrs Margaret Komene-Cooke
Room 16	Y 5/6	Manulua	Whaea Tania Manuera
Room 18	Y 7/8	Manulua	Miss Alicia Jones Associate Principal
Room 19	Y 7/8	Manulua	Whaea Matina Grace
Room 20	Y 6/7/8	Te Whānau Awhina	Whaea Maria Pahi
Room 21	Y 2/3	Te Whānau Awhina	Matua Desmond Moemoe Associate Principal - Te Puawai
Room 22	Y 6/7/8	Te Whānau Awhina	Matua Richard Maiava
Room 23	Y 4	Te Whānau Awhina	Whaea Mana-Whenua Ropati
Room 24	Y 0/1	Te Whānau Awhina	Matua Carter Ohlson
Room 25	Y 1	Te Whānau Awhina	Whaea Noelle Adams
Room 26	Y 5/6	Te Whānau Awhina	Matua Hone Foulds
Room 27	Y 2/3	Te Whānau Awhina	Ms Epenesa Laloava
Room 29	Y 6/7	Tautua mo Tupulaga o Samoa	Miss Penina Tali
Te Atea o Rongo			
Moana - Wheke	Y 1/2	Nga Pihinga	Whaea Jeslyn Warren
Moana - Whai	Y 1/2	Nga Pihinga	Mrs Tali Taua
Moana—Maki	Y 0/1	Nga Pihinga	Ms Sarah Moko
Kākano	Y 3/4	Nga Pihinga	Whaea Jacenda Tewano
Tipu	Y 3/4	Nga Pihinga	Ms Letisha Sheck
Māhuri	Y 3/4	Nga Pihinga	

CLENDON PARK SCHOOL STAFF

2024

Part-time Teachers

Mrs Maeva Chung-Earnest

Mrs Donna Cowley

Release Teacher

Mrs Marion Tonumalii

Mrs Margaret Komene-Cooke

Ms Ngawai Parata

Kiwi Can Group

Michelle Gago

Zab Mataia

SENCO

Kōkā Renee Tuapawa
Associate Principal

Admin Staff

Financial Administration

Mrs Hazel Annette

Administration Executive

Whaea Sandi Paora

Administration Executive

Kōkā Dee Williams

Support Staff

Learning Assistants

Mrs Tusani Ioapo

Mrs Natasha Jack

Whaea Tracey Lee

Ms Michelle Matiu

Whaea Lovey Pile

Ms Maria Riwhi

Mrs Alofa So'ofa'atasi

Miss Raiha Tamati

Mrs Lagi Tufuga-Kumar

Whaea Chenelle Waara

Mrs Tiffany Wayne

Ms Josephine Hopkins

Social Worker

Property Team

Property Manager

Mr Jason Eggins

Gardener Property Assistant

Ms Stacey Pask

Te Akomanga Rosehill — Rosehill Special School Staff

Teacher

Michelle Farrelly

Education Assistants

Melissa Tippins

Luxmii Hunt Mihaka Singh

Alfiza Khan

Connor Hutton



ACCIDENTS AND SICKNESS

Should a child have an accident at school or become seriously ill, he/she will be attended to in the Sick Bay. You will be notified by phone or in writing about the accident and the follow up treatment. If necessary a doctor or ambulance may be called or the child taken to a doctor. We will make every effort to contact parents.

Each family is asked to provide the name and telephone number of their family doctor. **Please make sure your emergency numbers and cell phone numbers are always kept up to date.** The school office must be advised if a student needs to take any form of medicine during the school day. The office holds and administers medicine.

NOTE: Medication will not be given to a child unless the relevant form (which can be obtained from the office) is completed by the parent or caregiver.

Please note that we do not permit our children to hold any type of medication under any circumstances, (including Ventolin). This is for Health and Safety reasons and is strictly enforced.



All medicines/ventolin are stored and administered in the school sickbay.

APPOINTMENTS WITH CLASS TEACHERS

We are always very happy to discuss your child's progress and achievements. All appointments to see class teachers must be made through the office so that a suitable time can be arranged.

Teachers are not able to have interviews between 8.55am and 3.00pm as they are teaching students in classrooms.



Remember that all visitors must call at the office first to sign in. This is a Health and Safety requirement.

ASSEMBLIES

Assemblies are a feature of our School and parents are always very welcome to join us. Whole School Assemblies are held in the Hall at 2.15pm each second Monday. Assemblies provide us with an opportunity to celebrate our students' achievements, for our students to perform items and share work, and to talk to them about relevant notices and school information

Team Assemblies:-

*Junior School (Y1-4)	Friday fortnightly	2.15 - 3.00
*Senior School (Y5-8)	Monday fortnightly	2.15 - 3.00
Whole School	Monday fortnightly	2.15 - 3.00





ATTENDANCE

It is expected that all children attend school whenever it is open, and arrive ready to begin work promptly at 8.55am. Parents have a legal responsibility to ensure that their child attends school daily and the Board of Trustees is required to take all reasonable steps to ensure that students enrolled do attend. Caregivers of children not attending school without good reason may be prosecuted. We are required to report repeated absences and frequent lateness to school to the Attendance Officer.

If your child is going to be away for any reason you can;

- **phone** the office and leave a message on the absence line.
- **email** the office at office@clendonpark.school.nz. Please make sure you have ABSENCE in the subject field.
- **text** absence message to the school mobile phone 027 890 3311 i.e. your text will look something like ...

Melanie Rm1 is away sick 2day.

Please ensure you include your child(rens) room number when you text.

AWARDS

These are seen as very important in our School and students are awarded regularly for a variety of reasons. We prefer to work with our students positively and give praise for achievement in learning, behaviour and social skills. Presentation of Awards is regularly made at Team and full school assemblies.

BEHAVIOUR

Behaviour at school must be of the highest standard. Students are expected to treat others how they would like to be treated themselves. Our behaviour policy is on the next page.



Caregivers of any student who has behaviour difficulties will be informed immediately. A number of programmes are in place to help students develop self management skills, as well as a daily support programme for identified students so that they can learn to use positive strategies to manage their behavior.

A Social Worker is employed in our school to support students with behaviour difficulties. Our Social Worker works between school and home as a positive support person. Parents should not hesitate to contact us at school should they have any concerns about their child's behaviour.



POLICY - BEHAVIOUR MANAGEMENT



ACTIONS

1. To develop an environment where there is mutual respect for, and tolerance of others.
2. To help students appreciate the rights of others to learn in a safe, secure environment.
3. To help students appreciate the consequences of their actions.
4. To teach students a range of strategies to manage a range of challenging situations, including anger management.
5. To ensure that all students who attend our school develop strong self management skills.

GUIDELINES

1. The school has a set of rules that is known and understood by the whole school and its community.
2. The focus of the behaviour management programme will be on helping students to develop self management skills and strategies and coping in challenging situations.
3. Parents/caregivers will be involved in developing an on-going plan of action when a child's behaviour is causing concern.
4. A clear set of disciplinary steps will be taken to deal with behaviour that is causing concern.
5. The behaviour code is applicable during the school day, coming to and going from school, on school trips and at all events organized by the school.
6. A tuakana / teina approach will be used throughout the school in the management of behaviour.
7. One to one and small group programmes will be available for identified students daily so that behaviour can be modified and self management skills can be developed.
8. Social skills will be introduced by our Kiwi Can leaders weekly to ensure that there is a consistent approach and expectation used throughout the school.



BI-LINGUAL CLASSES

Maori Bilingual Classes - Te Whanau Awhina

We are extremely fortunate to have eight Maori bi-lingual classes ranging from New Entrants to Year 8 at our school. Our students have the opportunity to become competent in both Te Reo Maori and English. Our Maori bi-lingual units have strong community input and on-going support from the Maori community. Should you wish your child to be considered for Te Whanau Awhina, please come and talk to us. The classes are very full at all times so there is sometimes a need to go on a waiting list. Our Maori bi-lingual students stay at Clendon Park School for Year 7/8 (Intermediate level). All Te Whanau Awhina classes meet from 8.55am to 9.15am for karakia which whanau are welcome to attend.



Samoan Bilingual Classes - Tautua mo Tupulaga O Samoa

We have six Samoan bi-lingual classes at present. We are currently catering for classes from New Entrant to Year 8. Again, these classes are often very full and there may be a need for your child to go on a waiting list until a vacancy occurs. Our Samoan bi-lingual students are able to remain at our school for Years 7/8 (Intermediate level). All Tupulaga classes meet each morning from 8.55am to 9.15am for lotu and fanau are very welcome to attend.



BOARD OF TRUSTEES

Our Board of Trustees is responsible for the overall governance of the school through our school Charter. A Copy of our Charter may be obtained at the school office. The Board of Trustees establishes our school policies in consultation with the Principal, staff and school community. Board Meetings are held on each third Wednesday of the month starting at 5.00pm in the Staffroom. Meeting times are published in the School Newsletter. You are warmly invited to attend our Board meetings at any time.

Trustees

Presiding Trustee	Mr Wayne Bennett
Principal / Correspondence Secretary	Mrs Sue Dawson
Trustee	Mrs Talia Brown
Trustee	Mrs Alisi Dickson
Trustee	Mrs Peni Turner
School Kaumatua / Co-Opted Trustee	Matua Alec Tairua
Staff Representative	Mr Desmond Moemoe

BICYCLES AT SCHOOL



We do not permit bicycles at school except for special 'Wheels Day' events. This is due to a number of serious accidents that have occurred in our local area, particularly on the very busy Rowandale Avenue.

BREAKAGES AND LOSSES

When wilful vandal damage to school property or equipment is done by a student, part of all of the cost for repair or replacement is expected to be met by the parents. Lost or damaged library books are included in this Policy.

BUSES

Our school has a 26-seater bus and four 12-seater vans. Our students regularly attend a large number of sporting, culture, learning and leadership events, so are able to travel freely to these events.



CLASS PROGRAMMES AND SPECIAL PROGRAMMES

Our teachers plan balanced teaching and learning programmes which meet individual student needs. The teaching of curriculum is based on that set for NZ Schools by the Government at the time. A very skilled team of support staff and teachers are also employed to help any students who have special needs. Additional programmes are in place to help extend students who have special interest/abilities. You are informed if your child needs to join one of these programmes and invited to school to discuss programme goals and ways you can support your child at home when they are on one of these programmes.

CLASS TRIPS AND VISITS

These are valuable learning experiences for our students and are linked closely to our classroom teaching/learning programmes. We always welcome parental support on our trips. At the beginning and end of each year we have a whole school / family picnic which we hope you will be able to come along to.



CLUBS / ACTIVITIES

These are some of the clubs and activities available to students:-

Kapa Haka, Tongan, Niuean, Samoan, Art, Drama, Cricket, Touch, League, Rugby, Student Hauora Team, Netball, Basketball, Swimming, School Councillors, Table Tennis and Chess.



CONCERNS & COMPLAINTS

Here at Clendon Park School we are always available to talk to you about any concerns or any complaints you may have. It is vital that you take immediate action to ensure that your concern or complaint is discussed and resolved as quickly as possible. Please contact your child's teacher or the Principal to discuss any issues you may have.

(Also refer to 'Procedures for Dealing with Parent Concern' flowchart on next page.)

CULTURAL GROUPS

We have a wide range of cultural groups for students to choose from. At present, these are: Kapa Haka, Samoan, Tongan, Niuean, Cook Islands. These groups meet on a regular basis and perform at our school functions throughout the year.



DENTAL CLINIC

A Dental Caravan is situated at our school for one term per year so that our students can receive dental treatment. You will be notified by letter when your child has a dental appointment. In the case of an emergency, you should phone the caravan on 839 0576 or Browns Road Dental Clinic on 264 0047.



PROCEDURES FOR DEALING WITH PARENT CONCERN

Parent has concern

Teacher

Team Leader or Associate Deputy Principal

Specific to child's learning

General school nature

Ring for an appointment

Ring for an appointment

- Interview held with teacher
- Issue discussed/documentated
- Resolution/action agreed upon
- Copy to appropriate personnel/student file

RESOLUTION SUCCESSFUL

RESOLUTION UNSUCCESSFUL

Teacher

Principal

AP / DP (Repeat A)

Principal (Repeat A)

Letter to Board of Trustees

Response/Resolution

NB: Interview should involve some/all parties concerned in open dialogue & communication.

Parents/whanau will be asked if they wish to be present when their child is interviewed

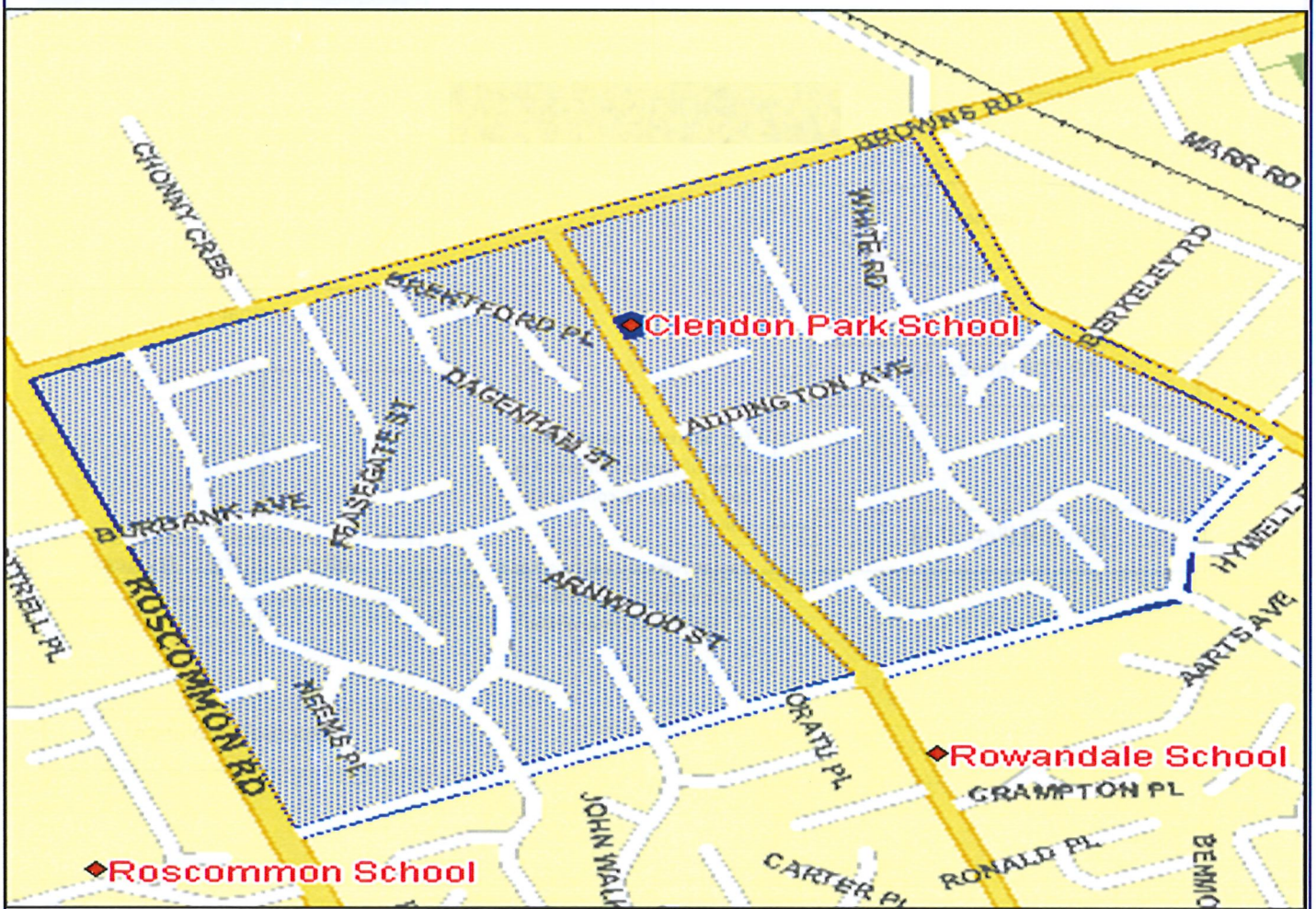
DIGITAL TECHNOLOGY

Each classroom in our school has a good supply of devices. Class sets of tablets are also available. We also have a computer suite with 25 computers. Our students are able to have whole class learning sessions for an hour and a half in the computer suite each week. A variety of Apps and programmes are available which include mathematics, interactive fiction and curriculum based activities. Students at our school are also taught how to use the internet and email safely as well as how to use a whole range of cameras and other technology to access information. All students who enrol at our school must have a signed Internet agreement before they are permitted access to the internet. A letter of explanation of how this works in our school is available for all parents annually. Teaching students about Cybersafety is an integral part of our Teaching/Learning programmes.



ENROLMENT ZONE

Clendon Park School has an enrolment zone. The Clendon Park School zone is bounded by: - Browns Road, Russell Road, Swallow Drive, Wordsworth Road, Roscommon Road and back up to Browns Road. See map of the zone below to enable our community to determine whether they are living in the school zone or not. Out of zone students wishing to enrol need to enter a ballot which occurs once per year. Ballot dates are advertised in the



ENROLMENT OF STUDENTS

A Birth Certificate, N.Z. Passport or a current student visa is required by law for all students enrolling at our school and must be produced before your child can be enrolled. Non - NZ residents will need to pay School Fees which are pre-set by the Ministry of Education. Parents of all New Entrants are required to present an immunisation certificate. Parents are encouraged to bring their New Entrant child along to orientation mornings, between 9.00 - 10.00, on Wednesday 3 - 6 weeks before their child starts school. This experience greatly enhances the way a child settles into school routines. Visits can be arranged through the school office. A parent or family member must stay in the room with their child during these visits.

ERO REPORT

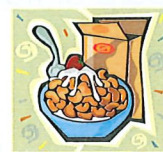
In September 2015 our school was reviewed by the Education Review Office. We received an excellent report which identifies Clendon Park School as being very effective at engaging students in learning that results in very good social and academic outcomes. The report also compliments our school on the high level of community participation and very good student achievement. ERO will review our school again in 4-5 years.

If you would like to read the full report for our school, you can go directly to the website at www.ero.govt.nz You can also request a copy of the report from our school office. Our next ERO visit will be in 2020.

FOOD INITIATIVES

Breakfast Club

Our school has a breakfast club running daily in the Whare kai from 8:15am - 8:45am. The breakfast club is open to all students who would like to have breakfast at school. Our breakfast club offers Weetbix and milk for students. This initiative is sponsored by Sanitarium and Fonterra. If you would like to help out in our breakfast club as a volunteer, please contact us — we are always very grateful to have parent support.



Fruit in Schools



We are a member of the Fruit in Schools programme. Every day, each child receives a piece of fruit. This initiative has been funded by the Ministry of Health and Counties Manukau. If you would like to know more about the Fruit in Schools programme or you would like to help us with this project, come and see us or phone the school on 267 6671.

Kids Can

We are extremely fortunate to have large quantities of food snacks provided free to our school. Each class has a container of food which students can help themselves to whenever they like.



School Lunches

Free school lunches are available daily for all students at our school. This programme is fully funded by the Government of New Zealand. Our tuckshop, operated by Thyme for Kai, offers a wide variety of healthy lunches each day at very competitive prices. Children can purchase or order snacks and lunches from the lunchroom before school between **8:20 am and 8:55 am.**

The tuck shop is open at playtime and lunchtime so that students are able to purchase healthy snacks. Buying in the lunchroom helps to support our school.

It is appreciated if students do **NOT** bring to School:

- Coloured snacks such as cheezels
- Fizzy drinks of any kind or coloured drinks
- Concentrated food or drinks eg, jelly crystals, Refresh, sweets,
- Drink in glass bottles.

Parents delivering their children's lunches during the morning are able to leave them at the Office. The school will provide a lunch free of charge for any students who do not have lunch.

GROUNDS

Great pride is taken in our school, both in gardens and grounds, which are smoke free by law 24hrs a day.

We encourage Community to use the school grounds and Hall by arrangement with the Board of Trustees.

HEALTH CHECKS

A Registered Nurse and a specially trained healthcare worker will be at our school every day. They will check for sore throats and skin infections. **Your child will only be checked if you have agreed to it and have signed and returned the consent form.**



Sore throat checks

The healthcare worker will visit the classrooms to ask and check if any children have a sore throat or symptoms of a sore throat.

Children with sore throats, or symptoms, will have a throat swab — but only if their parents have agreed and have signed and returned the consent form.

The Registered Nurse will contact you when the test results are ready.

Skin Infection Checks

The healthcare worker will visit the classrooms to ask children if they have any skin sores. Children's skin will be checked and cleaned and covered with a sticking plaster—but only if their parents have agreed and have signed and returned the consent form.



If your child has a skin infection, the Registered Nurse will contact you to talk about the infection and any treatment that may be needed.

HEALTH PROMOTING SCHOOLS

Health Promoting Schools are world wide. Our school is one of the most successful Health Promoting Schools in NZ and is leading other schools in the development of programmes. We believe health and well-being are extremely important and therefore we are always working towards making our school the healthiest possible place for our students and staff.

To do this we encourage school staff, students, whanau/family and the local community to work together on health and well-being issues that effect us all. If you would like to be involved in our Health Promotion Team, please contact the school office. We will keep you up to date with what is going on in Health promotion in our school through Newsletters. Our school has won a number of Silver Heartbeat Awards for Health and Nutrition initiatives and in 2006 we were awarded a Gold Heartbeat Award.



HOMEWORK

Setting aside time every day for homework is important so that all students can develop strong self management skills, research and study skills so they are well prepared for intermediate and high school.

Years 1/3 students (Juniors) will have a reading book each night and at year 3 an occasional small written task. Homework time for Junior children is 10-15 minutes per night .

It is our expectation that students in our senior school (years 4-8) will do homework 4 nights a week (Monday-Thursday)

- **Years 3 / 4 - 30 minutes a night**
- **Years 5 / 6 - 45 minutes a night**
- **Years 7 / 8 - 1 hour a night**

The homework will include maths, reading (20 minutes every night) spelling and word study, and may include newspaper research and tasks related to the topic being studied at school.

We are committed to helping our students develop strong study and research skills which prepare them to cope with the homework demands of Intermediate and College.



Suggestions to help you support your child with their homework

- No TV before homework
- A snack before homework
- All homework should be attempted
- Praise your child's work
- Talk to your child about their homework
- Have pencils and rubbers at home
- Take your child to the local library
- Look in our school newsletters for notification of the Home/School Partnership evenings where we will share ideas about how you can support your child.

Should you have any queries or concerns about your child's homework please do not hesitate to contact us.

Students who attend our study centre after school will complete their homework there



STUDY CENTRE

We offer an after school Study Centre for Year 6-8 students, supervised by our teaching staff. The centre is open Monday –Thursday from 3.15 - 4.45pm.

Students receive teacher support and guidance to complete their daily homework tasks as well as individual help to develop early study and research skills. Our Communications Centre, which consists of well resourced Library and Technology suite, offers students excellent opportunities in developing these skills. A snack and drink are provided during the session.

Should you wish your child to be enrolled in our Study Centre, please contact us at school for a Prospectus and enrolment form. This programme is fully funded by the Ministry of Education, so there is no cost to students or caregivers.



HOUSES

All students at our school from Year 0-8 are in a House. The houses are:



Totara



Tawa



Miro



Rimu

The school plans regular house activities such as sports and team events.

JEWELLERY

We permit our students to wear taonga, stud earrings and wrist watches only to school.

NO looped or dangling earrings and necklaces are permitted to be worn at school as these can be a serious health and safety hazard when students are participating in Physical Education and playground activities.



KIDSCAN

Our school is very fortunate to be participating in the KidsCan Programmes. We have been the recipient of many wonderful items of clothing such as raincoats, shoes, food, etc to help our students and their families.

KidsCan's mission is to provide food and clothing and basic healthcare in schools to enable children to reach their full potential.

Hungry, wet, cold and stressed is no way to start the school day (if it doesn't stop them from getting to school) but for 260,000 kiwi children living in hardship that is the reality. This can impact their educational growth and lead to a lifelong pattern of under-achievement. There is a way to break this cycle; by providing simple things like food, shoes, socks and raincoats, kids can arrive at school ready and able to learn. Their aim is prevent children in hardship from becoming adults in hardship by giving them the start in life they deserve.

KidsCan works with children at primary school level and supports them for as long as they need it, right through high school in some cases. They focus on three core areas: food, clothing and health. They are sponsored by businesses, government, community and Individuals. There is never any cost to the school.

KIWI CAN PROGRAMMES



We are now entering our fifth year as a Kiwi Can school. Our school is extremely fortunate in having two Kiwi Can leaders based here full time.

Kiwi Can is a life skills and values programme for 5-12 years olds. It is delivered in primary and intermediate schools throughout New Zealand.

The programme has proven to equip children with:

- A sense of self-worth and self-confidence
- The ability to take responsibility for their actions
- Essential life skills
- A 'can do' attitude to the challenges of life.

Kiwi Can is a whole school programme with all children attending a Kiwi Can lesson once a week every week of the school year. The focus is on making a change for every child in the school.

Trained Kiwi Can Leaders deliver high-energy and interactive lessons that contain a range of physical, mental; and creative challenges. Each lesson is based on a theme which is decided by the school.

Themes include:

- Relationships (e.g. friendship, conflict, teamwork, respect)
- Integrity (e.g. responsibility, trust, consequences)
- Resilience (e.g. goal setting, motivation, perseverance)
- Health (e.g. healthy eating, health action)
- The Environment (e.g. heritage, nature, community, New Zealand)

The school, in consultation with the Kiwi Can Leaders, determines the focus of the programmes.

Kiwi Can:

- Promotes pride and respect for other people, property and the community
- Reduces anti-social behavior such as bullying, bad language and graffiti
- Encourages the next generation to have pride in themselves, their environment and in New Zealand.

Outcomes of participation in the Kiwi Can Programme for our students are:

- Higher levels of student engagement
- Improved listening and communication skills
- Improvement in ability to play and work co-operatively together
- More students able to resolve conflicts independently
- Improvement in manners and politeness towards others
- A reduction in fighting and bullying in the playground

LIBRARY

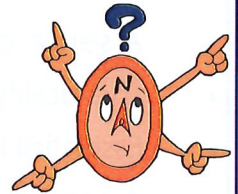
We have an excellent Library with a wide range of resources. We encourage our students to use the library during their lunch breaks. We have a wide range of books for adults to borrow as well as a number of books in Samoan, Tongan, Tokelauan, Niuean, Maori and Cook Island. Parent help and support is always very greatly appreciated. Please come and see us, or phone us a school if you would like to volunteer some time in our library.

LOST PROPERTY

ALL clothing including footwear, lunchboxes and bags must be named.

Lost property is kept in Room 10. Staff take all due care, but are unable to accept responsibility for any lost items of personal property or clothing.

Caregivers are welcome to check the lost property area at any time. Lost property is displayed regularly at school so that students may claim lost articles. Students must never bring expensive toys, games, or jewellery to school at any time.



MOBILE PHONES

We do not permit students to bring mobile phones to school. In cases of emergency, students are able to bring their mobile, but must hand it in to the office upon arrival at school. Students may access their phone at regular intervals throughout the day.



NEWSLETTER / PANUI

Our school newsletter / panui is sent home each fortnight on a Thursday. Make sure you ask your child for it.

Newsletters are one of our main ways of letting you know what is happening in our school. In newsletters you will find information about coming events, hui agenda, students writing, achievement results for students, health updates, consultations etc.

Our newsletters are given to the oldest or only child in each family.



POLICIES

Our Board of Trustees has developed policies for all the operational areas of our school and for the management of each curriculum area. You are welcome to read our school policies at any time. Please contact us at school.

PROGRAMMES

Programmes our students can participate in:

*** Careers Day**

The theme of the day is 'raising aspirations and shaping futures', and the multitude of activities scheduled through the day should encourage the students to do just that. Presentations from industry leaders and hands-on activities are incorporated into the day to unlock the students' passions. The event is designed to show the students how they can use their time and opportunities at school to shape their interests and provide useful insights into possible career pathways.

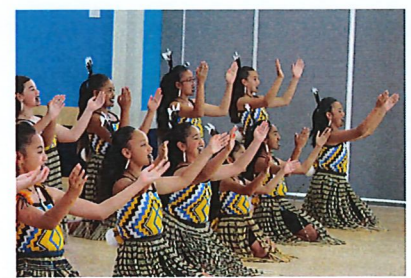
*** School Councillors**

Our school councillors have a key role in guiding and supporting students to step up as leaders. This is achieved by recognising and developing the leadership potential of our tamariki through student lead activities. This will help build leadership capacity in our school which will increase the opportunities for improving learning outcomes for our future leaders.

*** Cultural Groups**

We have a wide range of cultural groups for students to choose from.

At present, these are: Kapa Haka, Samoan, Tongan, Niuean, Cook Island. These groups meet on a regular basis and perform at our school functions throughout the year.



*** Jump Day**

Every year, we participate in a school-wide Jump Day. Whāeal in the weeks leading up to the day, students practise specific skipping routines and techniques, which they then apply on the day of the event. The day sees mixed-level teams (in which students range from New Entrants to Year 8.) rotate round ten skipping stations, showcasing their skills and generally having a massive amount of fun. We have music blasting all day, which contributes towards this being a highly anticipated date on our calendar—for both staff and students.

* **Kiwi Volley**

Basic Kiwi Volley (variation of regular volleyball) instruction.

* **Leadership Days**

The days aim is to develop student leadership and be both inspirational and practical. Today's young people are the future leaders of our nation—equip them with the skills and values to lead well.

The objectives for our leadership team are:

- * Inspiration
- * Connection
- * Student empowerment
- * Promoting positivity
- * Motivation
- * Education

* **Music / The Arts**

Our music programmes at Clendon Park School give plenty of opportunities for pupils to create, perform, and listen to a wide variety of musical genres. The emphasis is always on developing skills and understanding through varied performance programmes including choral, instrumental music, and movement activities.



* **Special Needs Programmes**

Those students identified by their classroom teacher as needing extra support in literacy will work with a teacher aide on a daily basis. They will complete various activities in and outside the classroom to help them meet national standards. You will be contacted if your child is identified as requiring extra support.

* **Speech Competition**

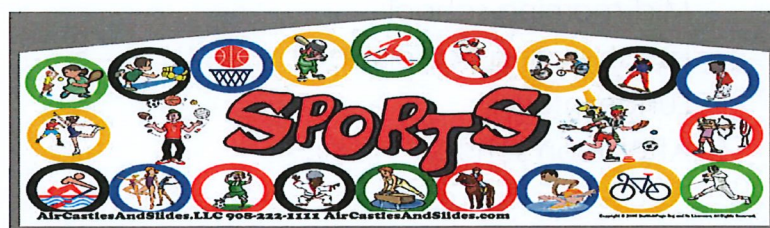
In Term 2 every year, our students from Years 3—8 participate in a speech competition. There are three cups up for grabs in this competition:

We present our winners with the Year 3-4 Cup, the Year 5-6 Cup and the year 7-8 Cup. Over the years, there have been many memorable moments and many unforgettable speeches during our speech competitions. To ensure there is no bias of any sort, we go to extreme lengths and invite independent guest judges each year! This is one of the most hotly-contested competitions of the year and is something our students always look forward to.



* **Sport**

Clendon Park is a school that prides itself on the amount of sports available to our students. Over the years, our students have had specialist coaching in sports such as tennis, swimming, cricket, rugby, rippa rugby, ultra rip, soccer, hockey, volleyball, netball—you name a sport, and our students have probably had coaching in it at some time!



* **Tabloids**

In Term 1 each year, our Senior School forgoes our usual bi-weekly assemblies for Tabloids. Our students are split into mixed year level groups and they rotate round eight or nine stations over the course of the term, where they get to experience a variety of sports. Sports have included T-Ball, Chinese Wall, Turbo Touch, Four Square, Handball, and many more. It is also a great chance for students to mix with people from other classes in the school. I think our students are genuinely devastated when the wetter weather rolls in in Term 2 and we have to go back to regular assemblies!

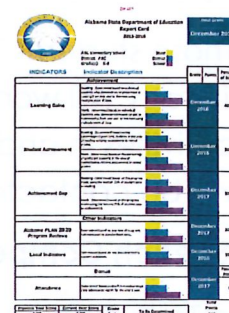
REPORTING TO PARENTS

This is carried out in many ways during the year, eg, Whanau hui, Open Days, Expo, Musical or Cultural evenings, Sports Days, etc.

Parent / Teacher / Student conferences at the end of Term 2.

This conference session enables you to:

- Share information about your child
- Know how well your child is achieving
- Ask the teacher about your child's progress
- Know what your child's on-going learning and social goals are.



Alabama State Department of Education
Report Card
2017-2018

INDICATORS	Indicator Description	2017-2018	2016-2017
Learning Skills	Alabama Department of Education (ADE) Learning Skills	85%	86%
Student Achievement	Alabama Department of Education (ADE) Student Achievement	85%	86%
Attendance Gap	Alabama Department of Education (ADE) Attendance Gap	85%	86%
Alabama Plan 2020 Progress Review	Alabama Department of Education (ADE) Alabama Plan 2020 Progress Review	85%	86%
Local Indicators	Alabama Department of Education (ADE) Local Indicators	85%	86%
Attendance	Alabama Department of Education (ADE) Attendance	85%	86%

The report is sent home before the conference and your child's work is discussed at the conference. Of course you are welcome to talk to your child's teacher about your child/ren's progress at any time during the year. We always really appreciate your interest, but please make an appointment first through our office.

Written reports are provided twice a year for all students in July and again in December.

SCHOOL HOURS

School hours are 8.30am—3.15pm. Students may enter the school grounds at 8.30am.

8.55 - 10.55	Early morning school
10.55 - 11.15	Interval
11.15 - 12.45	Mid-morning school
12.45 - 12.55	Lunch eating (supervised)
12.55 - 1.45	Lunch interval
1.45 - 3.00	Afternoon school

The School day is never shortened, nor are students ever sent home early.





Thyme for Kai

Clendon Park School Tuckshop

2024 Menu

SNACKS		HOT FOOD	
.50c	Small Vege Chips	\$1.20	Hash Brown
\$1.00	Fruit Strings	\$2.00	Garlic Bread
\$1.20	Popcorn	\$2.00	Spaghetti / Cheese Bun
		\$3.00	Nuggets x 6 with sauce
		\$3.00	American Hot Dog
		\$3.50	Beef / Cheese Burger
		\$3.00	Toasted Sandwiches - (1 filling) Chicken / Ham / Cheese 0.50c per Extra Filling
DRINKS			
\$1.00	Water	\$2.00	Calcium Milk
\$1.20	Twist Juice	\$2.00	Moosies / Juicies
COMBOS			
\$4.00	Hash Brown / Popcorn / Twist		
\$4.00	Garlic Bread / Popcorn / Twist		
<u>Please Note: Prices are Subject to Change</u>			

SCHOOL PLANS

Our School Plans (Annual, Strategic, Three Year Plan and Charter) are on display in the foyer. You are invited to read and discuss these with staff at any time. They outline our goals in all areas of our operations. Our Charter outlines our long term school goals while our annual plan shows the steps our school will take during the year towards meeting our long term goals. Each year our Board of Trustees, staff and community share ideas through consultation so that our charter and strategic plans can reflect any changes of goals / targets. It is most important that we receive your ideas and opinions when we are reviewing our charter.

Our Charter also contains student achievement targets and our achievement results for the year in Literacy and Numeracy.

SCHOOL RULES

Our School rules are:

1. I keep my hands and my feet to myself.
2. I do the things I am asked to do at once, without arguing.
3. I don't swear, name call, do put downs, bullying, or silly talk.
4. I ask for permission before I touch anyone else's things.
5. I look after all school property.

SCHOOL UNIFORM

School uniform is compulsory for all students who attend Clendon Park School.

Uniform can be purchased at The Warehouse, Clendon. You can choose from a range of uniform pieces. Our school colours are navy and gold. We have found that The Warehouse provide quality garments at a very good price. We will be keeping an eye on other uniform suppliers to ensure that we are able to offer parents competitive prices.

SCHOOL VISITORS

All visitors, including parents / caregivers, **MUST** sign in at the School Office, and wear a Visitor's label at all times they are in our school..

A Visitor Pass is issued when it is necessary for a parent to go to a classroom. No student is allowed to leave the school unless this has been cleared with the office first and notification has been received from their caregiver. Students are also required to sign in if they are late and sign out if they are leaving school during the school day.

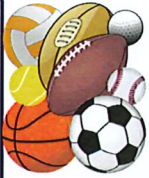
SMOKING

Our school buildings and grounds are smoke free, by law. We ask you to please support this Policy while you are on our school grounds.



SPECIAL UNIT

We have a Unit for multi impaired children. These children live locally and join in our school "happenings" and programmes whenever possible. The special unit "Te Akomanga Rosehill" is run by Rosehill Special School and is based in Room 15. Students in the Rosehill class are usually from within our school zone.



SPORTS

Sports are a real strength of our school. We offer many sporting opportunities for students and a variety of sporting programmes at our school. We will notify you of events at school through our fortnightly newsletters. This year we have a number of girls and boys rugby and league teams, Saturday netball, swimming, athletics, soccer, softball, basketball, cricket, volleyball. Our teams participate in all Manurewa inter-school sports events and Counties Manukau competitions (Year 7/8). We are always most appreciative of any support you can give us in coaching / training our teams.

STATIONERY

A starter stationery pack will be provided free of charge for the following students:

- Students who are currently enrolled at the start of Term 1 2021;
- New students who start during the months of January and February 2021;
- New Entrants (5 years old, starting first schooling) throughout 2021.

If students require top-up stationery items throughout the year these will be available for purchase from the school.

Students transferring into our school from other schools during the year should bring all their stationery from their previous schools.



SUN PROTECTION



Wearing of sun hats during spring and summer is compulsory. Trees are constantly being planted for shade and shelter. Please help protect your child by ensuring he/she brings a sun hat to school every day. Students who don't bring hats are required to sit in the hall for Health and Safety reasons. Each classroom has a supply of sunscreen lotion. This is freely available for student use.



SWIMMING

Learning to swim is a part of the Physical Education Curriculum. During the Summer months when the swimming pool is open, swimming is compulsory for all students. A note or medical certificate must be sent to the class teacher if your child is not to swim. Students must dress appropriately. (Close fitting T-Shirts are permitted.) Water Safety skills are also taught as part of our programme.

VALUABLES AND JEWELLERY AT SCHOOL

Students should not bring any valuables to school—jewellery, watches, calculators, toys etc. are brought at the student's own risk. Neither teachers nor the school are able to take responsibility for losses. The only jewellery at school are stud earrings, watches and Taonga.

We do not permit mobile phones to be brought to school.



YOUTH WORKERS AND SOCIAL WORKERS IN SCHOOLS (SWiS)

We have a full time Social Worker based at our school. Our Social Worker can provide early assistance and intervention to children and their families when social or family circumstances are causing a child to struggle with education, health or social development. The aim is to see safe, healthy and socialised children with a strong sense of identity, who are fully engaged in school.

Referrals can be made by the children or family themselves, or the school. Referrals need the consent of the family, as the service can only be successful with the family's willing participation and engagement.

The services are:

- Free to students and their families
- Completely voluntary—it's up to the children, young people and their families if they want to talk with a social worker.

The role of our Social Worker:

Our social worker can address concerns that are affecting the child's safety or wellbeing, their ability to learn or their family's ability to manage aspects of their lives. They team up with the student (and their family), and work with them on things like:

- Helping the child develop good relationship skills
- Helping the child feel good about themselves
- Working with the family to develop parenting skills
- Getting families help with issues like money advice or gambling worries

The Social Workers' role involves three key components:

- Social work with individual children and their families
- Development and implementation of group programmes
- Community liaison and service coordination.

Find out more about the SWiS worker's role (<http://www.familyservices.govt.nz/working-with-us/programmes-services/the-swis-service/becoming-a-swis-social-worker.html>)

